

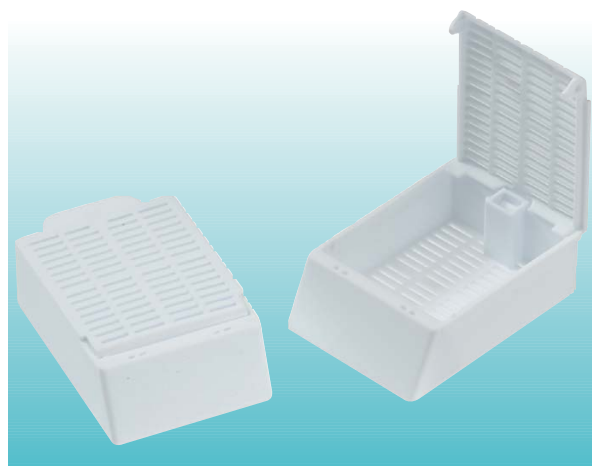
M512 MACROSETTE®

PROCESSING / EMBEDDING CASSETTES (with lid)

Made of acetal polymer

Similar to M492 Series but specially designed to **hold larger specimens** during the embedding process, as well as in a storage cabinet. Dimensions are exactly the same as the ones of a regular Histosette® cassette but the Macrosette® is twice as high.

Each case contains 3 dispenser boxes of 250 cassettes.



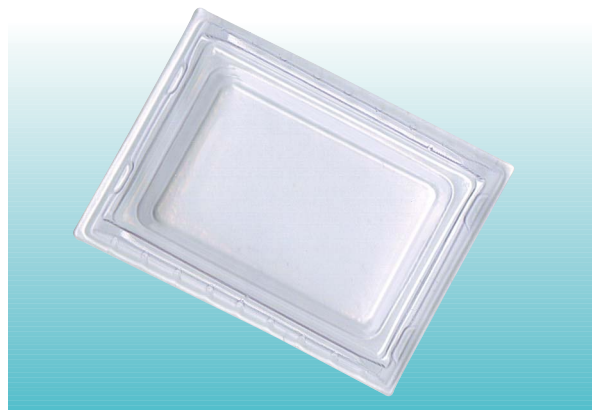
Cat. #	Color	Qty/Cs
M512	White	750

M475-10

DISPOSABLE DEEP BASE MOLD FOR MACROSETTE®

Made of PVC

Made specially for the Macrosette® above, this base mold offers ease and convenience of operation. It is inexpensive enough to be discarded after use, yet strong enough to be reused. Thanks to the specially formulated plastic material, it offers excellent thermal exchange. It has a smooth interior finish and rounded corners to facilitate its removal. Will resist temperatures from -80 °C to 60 °C. Not to be used with xylene or acetone.



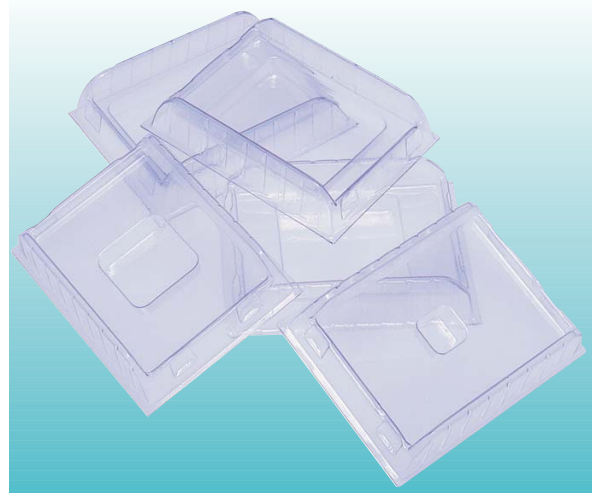
Cat. #	Size (mm)	Vol	Qty/Cs
M475-10	37 x 24 x 10	5 ml	500

M475

DISPOSABLE BASE MOLDS

Simport disposable base molds offer ease and convenience of operation. They are inexpensive enough to be discarded after use, yet strong enough to be reused. Thanks to the specially formulated plastic material, they offer excellent thermal exchange. They have a smooth interior finish and rounded corners facilitating specimen removal. Also, they are available in the same variety of sizes as metal molds and can be used with the same styles or types of cassettes and embedding rings.

Each case contains 2 dispenser boxes of 500 base molds.



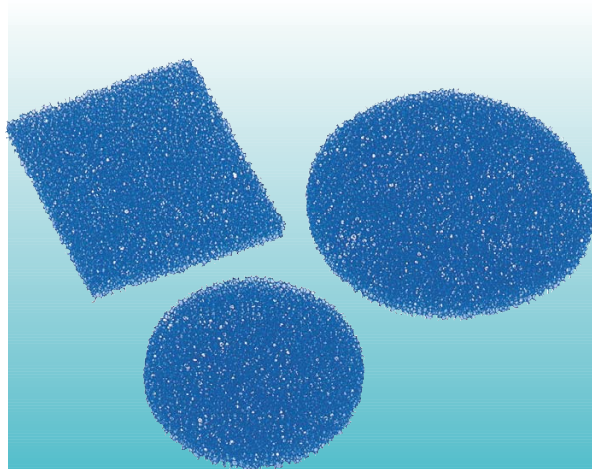
Cat. #	Size (mm)	Qty/Cs
M475-1	7 x 7 x 5	1000
M475-2	15 x 15 x 5	1000
M475-3	24 x 24 x 5	1000
M475-4	30 x 24 x 5	1000
M475-5	37 x 24 x 5	1000

M476

BIOPSY FOAM PADS

Made of polyester urethane foam

Simport biopsy foam pads are used to hold biopsies in place and prevent them from being lost during processing. They are made of 30 PPI cellular polyester urethane foam which is always verified for consistency throughout in order to achieve optimum solvent flow. Biopsy samples are sandwiched between two foam pads and are placed either in tissue capsules or cassettes* with metal or plastic lids. Will resist temperatures from -40 °C to 100 °C. Each package contains one thousand foam pads.



Cat. #	For use with	Size (mm)	Qty/Cs
M476-1*	Cassettes	30.2 x 25.4 x 2	10 000
M476-2	Small capsules	25.4 x 2	10 000
M476-3	Large capsules	34.55 x 2	10 000

* Use with the following Simport cassette Series : M480, M490, M491, M498 and M499.